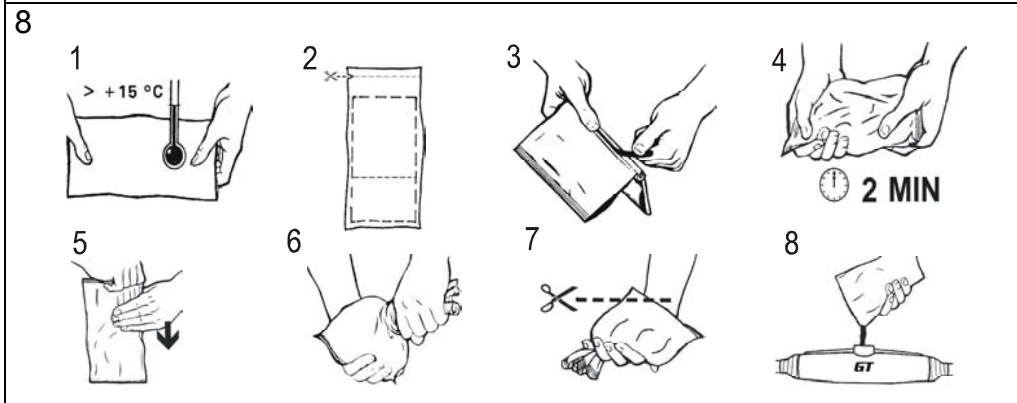
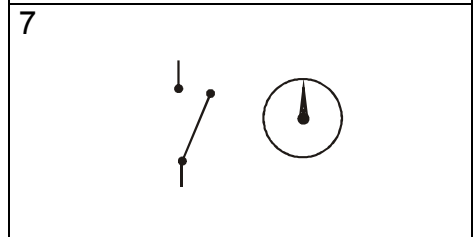
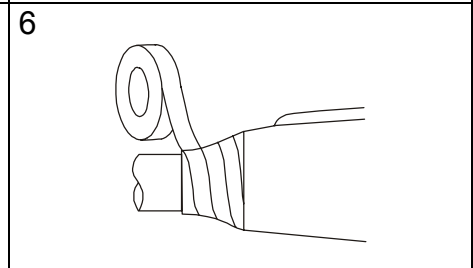
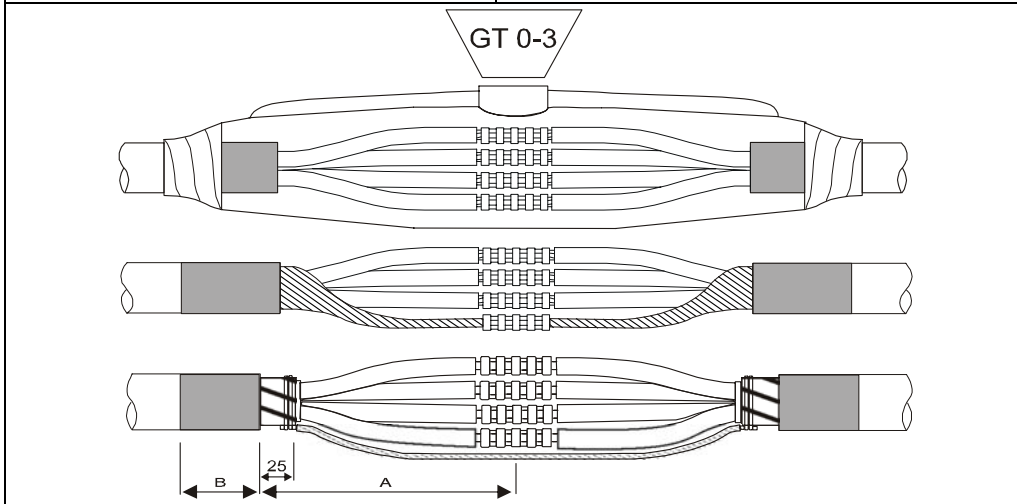
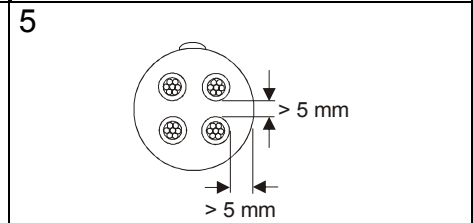
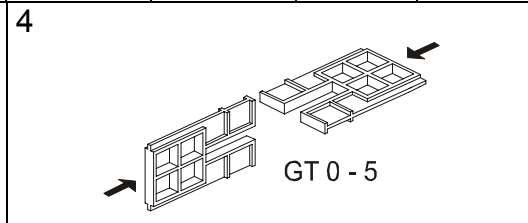
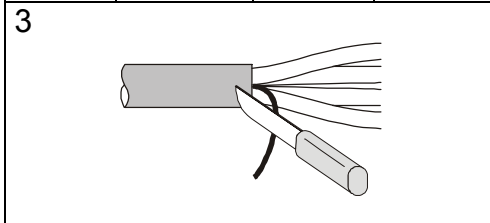
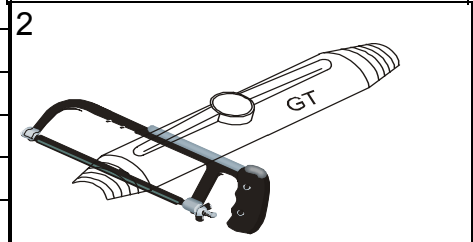
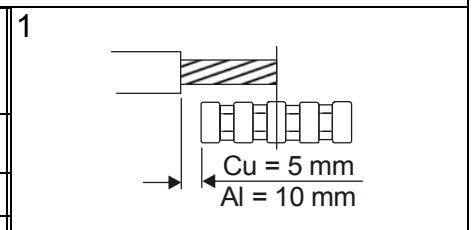


Joint Type	D	N(A)YY		N(A)YC(W)Y	NYFGY	A	B
	from - to	Max. no. of cores, max. cross-section					
	mm	mm <sup>2</sup>				mm	
GT 0	6 - 19	4 x 4	5 x 2,5			50	30
GT 1	6 - 27	4 x 10	5 x 6			55	40
GT 2	14 - 34	4 x 16	5 x 10	3 x 16/16		80	40
GT 3	16 - 37	4 x 25	5 x 16	3 x 25/25		95	40
GT 4	20 - 44	4 x 50		3 x 50/50	4 x 35	140	40
GT 5	26 - 52	4 x 95		3 x 95/95	4 x 70	175	40
GT 6	35 - 67	4 x 150		3 x 120/120	4 x 120	200	40



**Packing list**

- Mold shells
- Protective gloves
- Funnel (GT 0 – 3)
- Top
- Sealing tape
- Cast resin
- Distance holders (GT 0 – 5)
- Mounting instruction



**NORATEX ABEE**  
 ΕΝΕΡΓΕΙΑΚΑ ΣΥΣΤΗΜΑΤΑ & ΦΩΤΙΣΜΟΣ LED  
 17° Χλμ. Λ. ΣΠΑΤΩΝ 15351 ΠΑΛΛΗΝΗ Τηλ.: 210 6030221  
 Email: [georgios@noratex.gr](mailto:georgios@noratex.gr) Kiv: 6944 262902  
 Email: [neofitos.ch@noratex.gr](mailto:neofitos.ch@noratex.gr) Kiv: 6944 536700  
 Email: [thania@noratex.gr](mailto:thania@noratex.gr) Kiv: 6944255779  
 NEO web site: <http://www.noratex.gr>

Mounting instruction  
 for  
 Cast resin straight joints  
 Type GT 0 to GT 6  
 5x2,5 mm<sup>2</sup> to 4x150 mm<sup>2</sup>  
 U<sub>0</sub>/U (U<sub>m</sub>) 0,6/1 (1,2) kV

MA102300E © GT  
 Date: 2008-07-28  
 replaces: 2007-03-01  
 drawn by: HS  
 checked by: UP  
**Made in Germany**