

QUICKI-System by GT



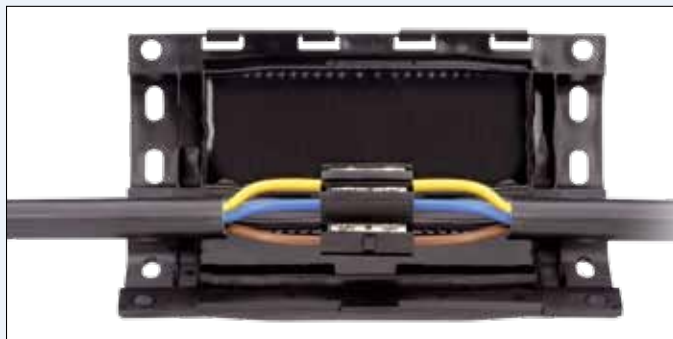
The GEL-Technique of GT is a new system providing special advantages. It offers quick mounting and reduces possible sources of error. The hit-proof mold shells are connected by a film hinge.

Enclosed in the set, GT supplies for all low voltage straight joints an insulated connector block with allen key (for the screw connection). After joining, the shell is folded up and secured. The special gel type GQ with optimized characteristics provides the functions of sealing and insulating. A specially created double seal prevents the leakage of gel out of the mold shell by adapted filling into clamp space. It is possible to connect voltage immediately. Like other GT accessories the straight joints and branch joints are tested for low voltage according to DIN EN 50 393. So the use in water, outdoor and ground is ensured. In addition, different types have 2 bore-holes in the upper part and can be screwed on, screwed tightly or hung up. The QUICKI joints can be applied as well for connecting telecommunication cables. Yet provided with the required number of connectors, straight and branch joints can be mounted without a lengthy heat-shrinkage. Of course, the necessary shield continuity clamp is provided as well. Flame protection and burning of the cable insulation are part of the past. So today telecommunication cables can be spliced quickly and easily! The cable jacket repair joints are an especially new solution. Without using flame or cast resin, it is possible to repair damages of the cable jacket quickly and easily. If necessary, the joint accessories can be reopened at any time.

Advantages

- Double-seals, proprietary DBGM™
- Protects, insulates and seals in one operation
- Always provided with the right clamps
- Universal
- For all common insulation material
- Re-openable
- Shells made of solid, hit-proof polymeric material
- Easy mounting
- High temperature resistant gel from -40°C to +140°C
- UV-rays-resistant
- No flame
- Unlimited lifetime
- No mixing necessary
- Mounting without special tools
- With/without connector block, single connectors or single-core connectors
- Ready-for-use in ground, water, outdoor and installation ducts
- Tested according to DIN EN 50 393
- Waterproof up to 1m water depth
- Cables are reaching tensile strength values twice as high as required for flexible cables

QUICKI straight-through and branch joint with 5-core screw connector block



Application

- In water, ground, outdoor and installation ducts
- For cables and flexible cables from 10 mm diameter

Advantages

- UV-resistant
- Shells made of hit-proof, halogen-free PP
- With double-seal
- With 5-core screw connector block
- High temperature resistant gel type GQ from -40 °C to +140 °C
- No special tools required
- Good adhesion on metallic and polymeric surfaces
- Tested according DIN EN 50 393 type 1 and type 2

QUICKI straight-through joint with 5-core screw connector block

Cable	Non-armored cable mm ²	Dimension L x W x H mm	Article Number	Type
2 x	3–5 x 1,5–6	155 x 60 x 31	000 930	GTQ 6
2 x	3–5 x 6–16 round solid	200 x 75 x 37	000 931	GTQ 16

QUICKI straight-through joint with 5-core screw connector block

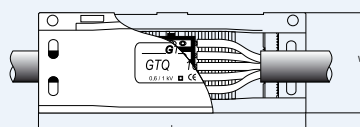
Cable	Armored cable mm ²	Dimension L x W x H mm	Article Number	Type
2 x	3–4 x 1,5–4/4	155 x 60 x 31	000 930	GTQ 6
2 x	3–4 x 6–10/10 round solid	200 x 75 x 37	000 931	GTQ 16

QUICKI branch joint with 5-core screw connector block

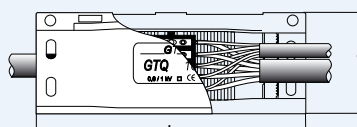
Cable	Non-armored cable, Main/branch mm ²	Dimension L x W x H mm	Article Number	Type
3 x	3–5 x 2,5 / 5 x 1,5	155 x 60 x 31	000 930	GTQ 6
3 x	3–5 x 6 / up to 5 x 2,5	200 x 75 x 37	000 931	GTQ 16

QUICKI double branch joint with 5-core screw connector block

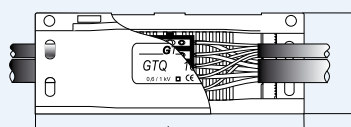
Cable	Non-armored cable, Main/branch mm ²	Dimension L x W x H mm	Article Number	Type
4 x	3–5 x 2,5 / 5 x 1,5	155 x 60 x 31	000 930	GTQ 6
4 x	3–5 x 6 / up to 5 x 2,5	200 x 75 x 37	000 931	GTQ 16



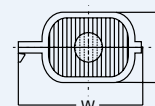
Straight-through joint type GTQ 16



Branch joint type GTQ 16



Double branch joint type GTQ 16



Delivered set

- Gel-filled shell with new double seal
- Connector block with allen key
- Cable ties
- Mounting instruction

Remarks

QUICKI straight-through- and branch joint for telecommunication see page 79.

QUICKI straight-through joint

for flexible cables with 5-core screw connector block



Application

- For flexible cables outdoor and in installation ducts

Advantages

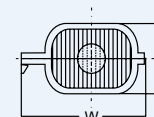
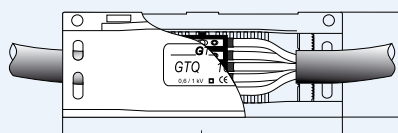
- With double seal
- Tear values of joint are higher than of flexible cable
- Hung mounting possible
- High mechanic stability
- High temperature resistant gel type GQ from -40°C to +140°C
- UV-resistant
- Shells made of hit-proof, halogen-free PP
- With 5-core screw connector block
- No special tools required
- Good adhesion on metallic and polymeric surfaces
- Tested according to DIN EN 50393 type 1 and type 2

QUICKI straight-through joint for flexible cables, with 5-core screw connector block; wire end sleeves have to be used

Flexible cable mm ²	Dimension L x W x H mm	Article Number	Type
3–5 x 1,5–4	155 x 60 x 31	000 935	GTQ 6L
3–5 x 6	200 x 75 x 37	000 936	GTQ 16L

Delivered set

- Gel-filled shell with new double seal
- Connector block with allen key
- Cable ties
- Mounting instruction



Straight-through joint type GTQ 16 L

QUICKI cable jacket repair joint



Application

- Permanent use with cables and flexible cables for repairing damaged cable jackets
- In water, ground, outdoor and installation ducts

Advantages

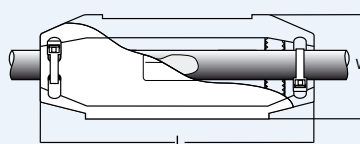
- Repairs, seals and protects the damaged cable jacket in one single operation (required: intact core insulation or fibres)
- Proprietary double-seal, waterproof
- Shells made of hit-proof, halogen-free PP
- UV-resistant
- Unlimited storage time
- Quick repair without special tools
- Additional re-opening safety device (plomb) by means of cable ties
- Complete with gel and cable ties
- No warning marks necessary
- Economical

QUICKI cable jacket repair joint

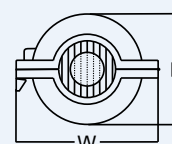
Cable Ø mm	Damaged cable jacket Length max. mm	Dimension L x W x H mm	Article Number	Type
7–16	70	121 x 46 x 35	000 955	GTQR 16
19–25	120	198 x 66 x 57	000 956	GTQR 25

Delivered set

- Gel-filled shell with new double seal
- Cable ties
- Mounting instruction



Repair joint type GTQR 16



Wall fastening for GTQR 25

Stainless steel, easy installation, with allen screw M4

	Article Number	Type
Wall fastening	180 021	GVAM 30W



QUICKI end joint



Application

- If a cable is laid under voltage in ground, the cable end must be sealed puncture-resistant and waterproof. So all previous connections are supplied with tension.

Advantages

- Re-openable
- Re-usable as end cap
- Fulfills two functions
- Quick installation without special tools
- Additional re-opening safety device (plomb) by means of cable ties
- Complete with gel
- No mixing, no casting, no flame
- No expiry date
- Usable in ground, water and outdoor
- Tested up to 1 m water depth
- Reliable sealing
- Removable without heating
- Easy installation
- Reduced stock
- High mechanical protection
- No special tools necessary
- No gas burner required
- Shorter working time
- Tested according to DIN EN 50393 end joint type 1
- Economical

QUICKI end joint

Number of cores Cross-section mm ²	Cable diameter min. – max. mm	Article Number	Type
4 x 35 – 50	25 – 35	601 152	GTQE 35 – 50
4 x 120 – 150	40 – 54	601 150	GTQE 120 – 150

Delivered set

- 5 pieces end joints
- 5 pieces cable ties
- 5 pieces cleaning tissues
- Mounting instruction

QUICKI end cap



Application

- For sealing of polymeric-insulated cables which are stored outdoor to prevent penetration of water

Advantages

- Track-resistant
- Re-usable
- Quick installation without special tools
- No mixing, no casting, no flame
- No expiry date
- Reliable sealing
- Removable without heating
- Easy installation
- Reduced stock
- High mechanical protection

QUICKI end cap

Number of cores Cross-section mm ²	Cable diameter min. – max. mm	Article Number	Type
4 x 35 – 50	25 – 35	601 153	GTEK 35 – 50
4 x 120 – 150	40 – 54	601 151	GTEK 120 – 150

Delivered set

- 5 pieces end caps
- 5 pieces cleaning tissues
- Mounting instruction

QUICKI-GEL in mixing bag



Application

- For sealing and insulating in telecommunications equipment and in electronic assemblies
- Usable in all devices and connection- or branch boxes, in which moisture can appear. Clamps are accessible later without removing the gel from the branch box.

Advantages

- One component coloured blue for better control of the mixing procedure
- Removable
- Flexible
- Cross-linking under influence of water
- Excellent adhesive strength on metal and synthetic material
- Temperature range -40 °C up to +140 °C
- Flame-resistant
- Waterproof > 0,01 MPa
- High hydrolysis-resistance
- Resistant against UV-rays
- Resistant against alkaline earths
- Soft-elastic
- Transparent

QUICKI-GEL in mixing bag

Contents ml	Weight kg	Article Number	Type
170	0,18	020 850	GQM 170
250	0,26	020 851	GQM 250
400	0,42	020 852	GQM 400
600	0,62	020 853	GQM 600
800	0,86	020 854	GQM 800
1000	1,02	020 855	GQM 1000

Delivered set

- GEL type GQ in transparent mixing bag with protection bag
- Mounting instruction

Remarks

Hardened gel can be removed with the normal garbage.